



# GUST ELEMENTARY

4/17/25

Good Afternoon, Gust Families,

We had an exciting week at Gust! Students showcased their abilities during Talent Show auditions for the upcoming performance on May 15th at 5:30 PM. Meanwhile, our 2nd graders enjoyed a field trip to the Clyfford Still Museum, where they explored his remarkable abstract artwork.

Reminder: There will be no school for students tomorrow, April 18th.

Our next Coffee and Community is on April 24, 2025. The focus of this meeting will be on Unhealthy Perfectionism in students!

Check out our [Facebook](#) and [Instagram](#) pages to see all the fun activities happening at Gust.

### **Operations**

Breakfast is provided to students from 7:30 to 7:45. After 7:45, breakfast is cleaned up so that students can start learning for the day. Please make sure students are on time for school.

### **Instruction**

We are nearing the end of the 2024-25 school year and many families are already making exciting plans for the summer! [Summer programming](#) allows students a safe place to have fun, make friends and continue their learning. Both Denver Public Schools and the City and County of Denver offer summer opportunities and resources for our students and families.

Teacher Appreciation Week is just around the corner, taking place **May 5-9!** In celebration, DPS invites our students to recognize their favorite teachers by sharing what they love most about them. Please share this opportunity with students and ask them to share why they love their teachers by completing this [short form](#) by **Friday, April 18!** Submissions may be featured on the [DPS website](#) and DPS social media pages ([Facebook](#), [Instagram](#), [LinkedIn](#)).



# GUST ELEMENTARY

Invite your families to the Multilingual Education District Advisory Committee (MLE DAC) on **Wednesday, April 23** from 9-11:00 a.m. The meeting will be held in person at the Lowry Conference Center. This month, we will have district experts sharing information on Special Education, Gifted and Talented and other DPS student services. Breakfast, interpretation and childcare will be provided. Share the [event flyers](#) with your MLL families. Attendees are encouraged to [pre-register](#), and staff are also highly encouraged to attend. For more information, visit the [MLE website](#) or email [Olga Olivas](#) or call 720-423-3058.



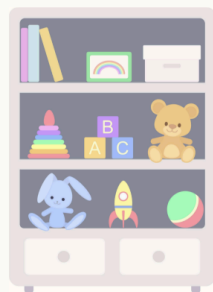
DENVER  
PUBLIC  
SCHOOLS

## Community Hubs

### BABY GEAR MARKETPLACE

In association with Weecycle we are happy to provide to you our Baby Gear Marketplace where families can receive essential baby items, including diapers

*Based on availability from our provider Weecycle*



Interested in visiting our Baby Gear Marketplace?  
Call us today to schedule your visit!

SW Community Hub  
Johnson Elementary School  
1850 S Irving St, Denver, CO 80219  
Entrance at door #6 on Hooker St



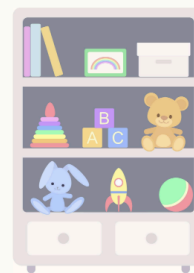
DENVER  
PUBLIC  
SCHOOLS

## Community Hubs

### MERCADO DE ARTÍCULOS PARA BEBÉS

En asociación con Weecycle, nos complace ofrecerle nuestro Mercado de artículos para bebés, donde las familias pueden recibir artículos esenciales para bebés, incluyendo pañales

*BASADO EN LA DISPONIBILIDAD DE NUESTRO PROVEEDOR WEECYCLE*



¿Te interesa visitar nuestro Mercado?  
¡Llámanos hoy para programar tu visita!

SW Community Hub  
Johnson Elementary School  
1850 S Irving St, Denver, CO 80219  
Entrance at door #6 on Hooker St



**GUST**  
**ELEMENTARY**

Have a great weekend,

Kathleen Marucheu and Jill Ellis